



Stormwater flows into streams, rivers, bayous, lakes, and bays without treatment when rain flows over the ground or paved surfaces.



WHAT IS STORMWATER?

Stormwater is the runoff that occurs during rain. But unlike water that goes down the drain in your home, stormwater is not treated before it reaches area waterways.

Impervious surfaces like driveways, sidewalks, parking lots, and streets prevent stormwater from soaking into the ground.

Stormwater picks up potentially harmful debris, chemicals, dirt, and other pollutants along its journey to the nearest body of water.

PROTECTING STORMWATER

Local governments inspect and enforce permit regulations and monitor water quality for activities that result in discharges to local stormwater systems.

Stormwater pollution isn't just a government problem. Businesses, industries, and residents are each responsible for a portion of the pollutants deposited by stormwater runoff into local waterways.

It takes continuous efforts from everyone to protect the quality of our waters.

Protecting Our Water

Starts with You



Learn more:

h-gac.com/water

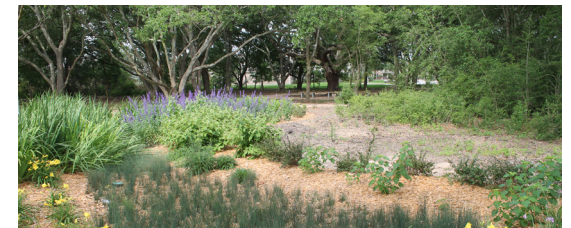
WaterResources@h-gac.com

twitter.com/HGACWater

Funded in part by the
Texas Commission on Environmental Quality
and the Galveston Bay Estuary Program

CE0716

HGAC
Water Resources



What Can You Do?



Get Involved

Learn about your watershed by joining a watershed association or organization.

Become an H-GAC Texas Stream Team volunteer water monitor.
www.h-gac.com/go/tst

Report water quality concerns.
www.GalvBay.org/gban

Participate in the River, Lakes, Bays 'N Bayous Trash Bash®.
www.TrashBash.org



RIVER, LAKES
BAYS 'N BAYOUS TRASH BASH.

AT HOME

Maintain and repair your on-site sewage facility (septic system).

Keep fats, oils, and grease out of sink drains. www.CeaseTheGrease.net

Take the car to local car washes that treat or recycle wastewater.

Repair auto fluid leaks and recycle motor oil.

Safely store leftover paint and chemicals for recycling.

Empty cleaning water into sinks, not outside.

IN THE YARD

Use lawn chemicals sparingly and always follow label directions.

Check sprinkler heads to make sure they aren't watering paved surfaces.

Sweep instead of hosing down the driveway.



Bag or compost leaves and grass clippings.

Pick up pet waste and put it in the trash.

Use permeable pavement, rain gardens, grassy swales, or rain barrels to slow the flow and filter stormwater.



AROUND TOWN

Keep the storm drains on your street free of debris.

Never dump anything down a storm drain.

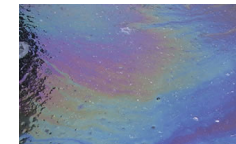
Report littering or illegal dumping to authorities.



Construction sites should prevent soil erosion and contain construction debris through best management practices.



In agricultural settings, keep riparian areas along waterways vegetated to filter pollutants.



Businesses and industries should have procedures for spill cleanup and keep outdoor areas clean and free of debris.



COMMON POLLUTANTS

These pollutants can be harmful to plants, fish, animals, and people.

Detergents & Fertilizers
Litter & Debris

Cigarette Butts
Yard Waste & Sediment

Paint & Chemicals
Pet Waste